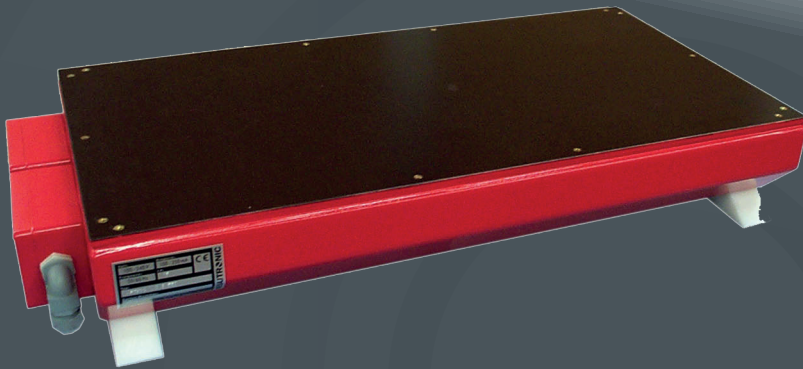




**A Bunting® Magnetics Company**

# Underbelt Metal Detector

- Reliable** in process and detection
- Durable** in technology and performance
- Easy** in installation and handling



The Underbelt metal detector is provided as an economical installation for protection against hazardous or harmful ferrous and non-ferrous tramp metals.

Easy to install and operate and provides a good solution to applications with lighter or shallower depths of conveyed products or where only the larger sized pieces of tramp metal are required to be detected.

Typical applications include the inspection of plastics, quarry stone, coal, textiles, fabrics and certain bulk food and feed products.

- Underbelt metal detector for a wide variety of applications
- Excellent sensitivity to ferrous, non-ferrous and stainless steels
- Models to suit from 200 - 3500mm belt width
- Easy to install without excessive modifications
- Compact design - ideally suited for shallow burden applications
- Most economical solution to tramp metal problems.



For more information on our full range of detectors please contact us on the contact details below.

## **Metal Detection**

Burnt Meadow Road, North Moons Moat,  
Redditch, Worcestershire, B98 9PA  
E-mail: [info@metaldetection.co.uk](mailto:info@metaldetection.co.uk)  
Tel: +44 (0)1527 65432 Fax: +44 (0)1527 65868  
[www.metaldetection.co.uk](http://www.metaldetection.co.uk)

